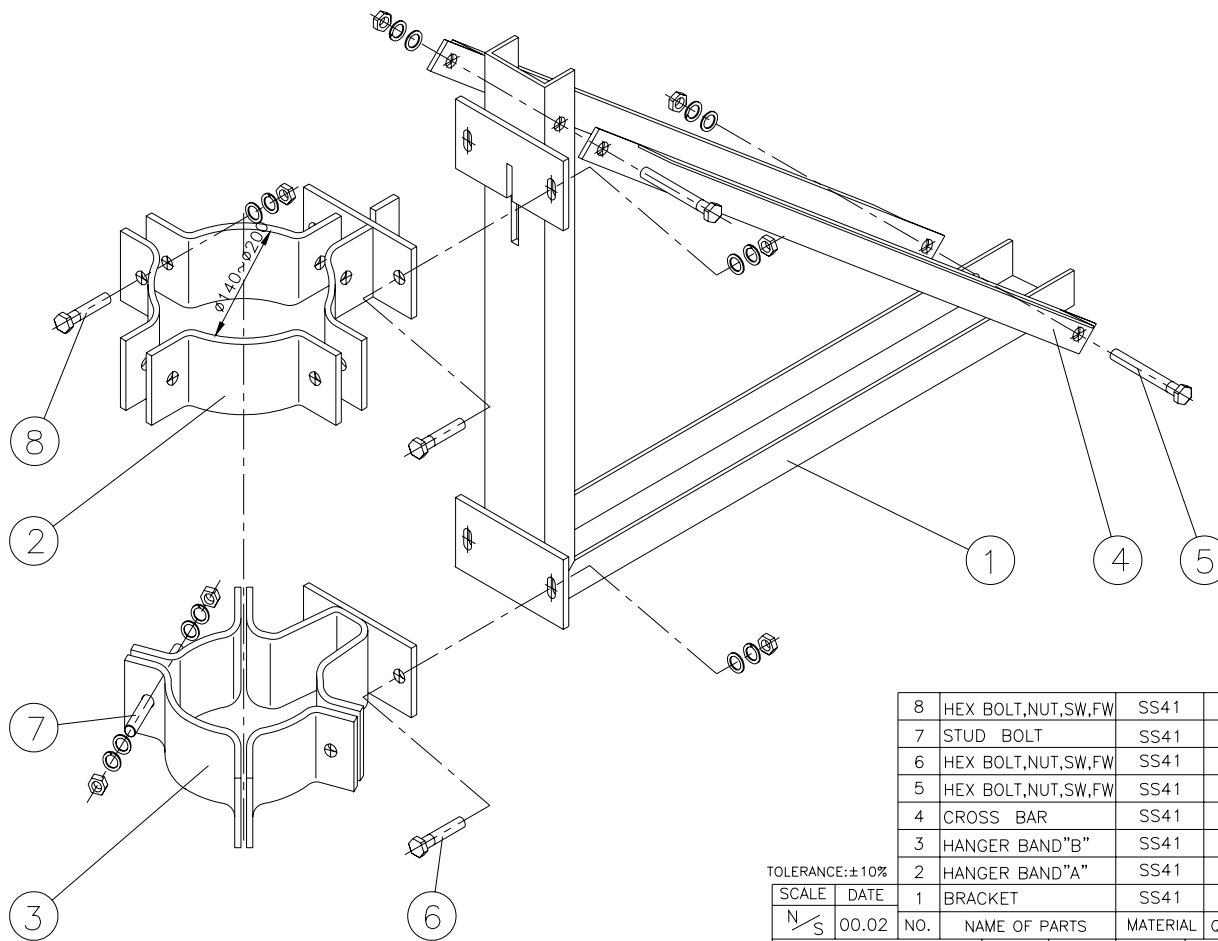


TOLERANCE: ± 10%

SCALE	DATE	NO.	NAME OF PARTS	MATERIAL	Q'TY	REMARKS	SIZE/PART DWG.
N/S	2007.01						
REVISION			APPROV.	CHECKED	DSGND.	DRAWN.	NAME SCHEMATIC DIAGRAM(AUTO) SF6 GAS LOAD BREAK SWITCH
						REF. NO.	
						DWG. NO.	JKGS-A-9100



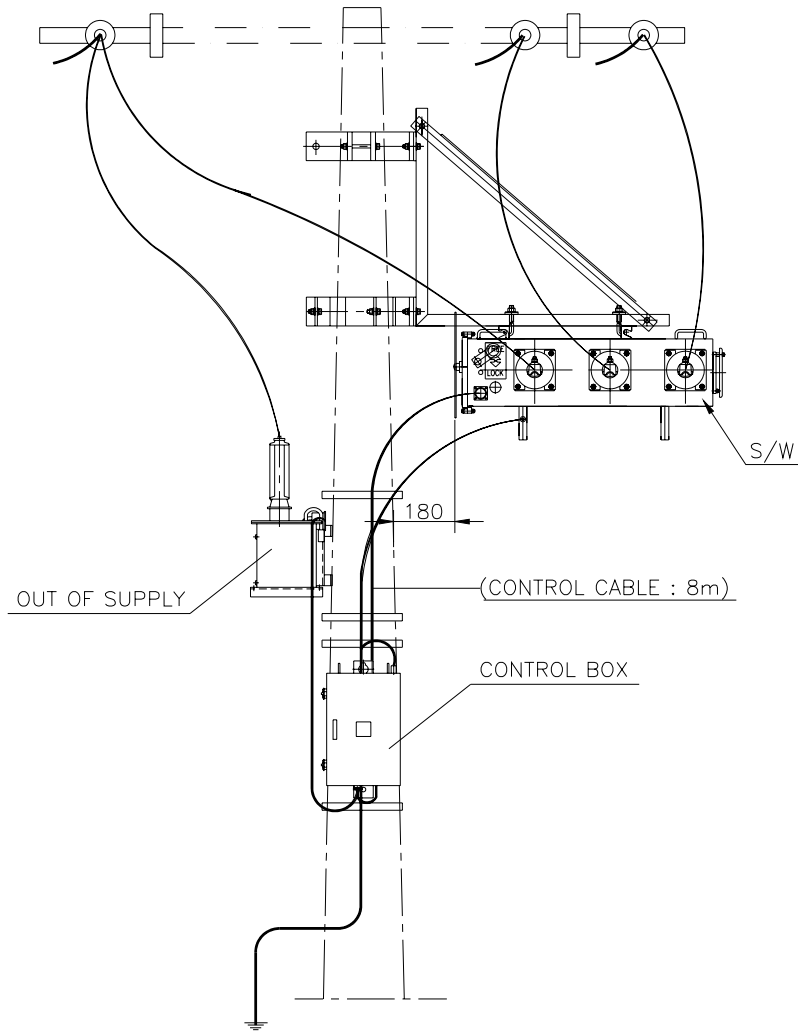


8	HEX BOLT,NUT,SW,FW	SS41	4		M16X120 l
7	STUD BOLT	SS41	4		
6	HEX BOLT,NUT,SW,FW	SS41	4		M16X50 l
5	HEX BOLT,NUT,SW,FW	SS41	2		M16X150 l
4	CROSS BAR	SS41	2		
3	HANGER BAND "B"	SS41	1		
2	HANGER BAND "A"	SS41	1		
1	BRACKET	SS41	1		


TOLERANCE: ± 10%

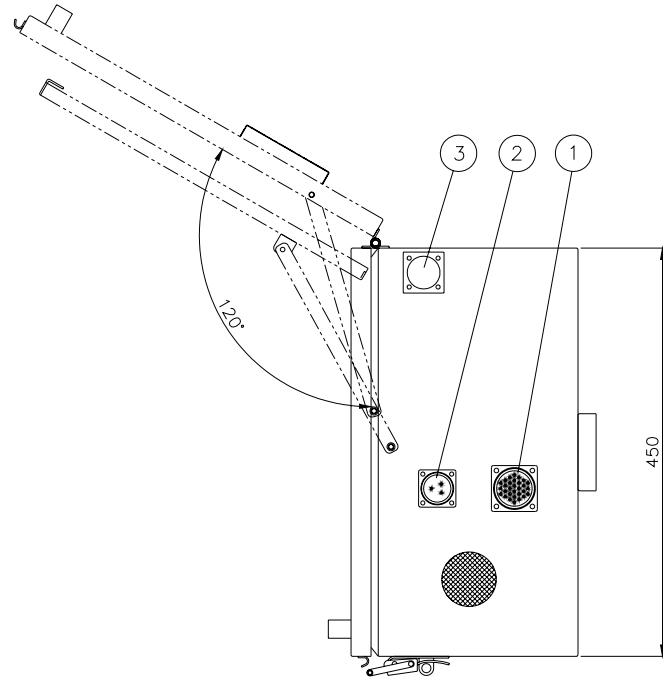
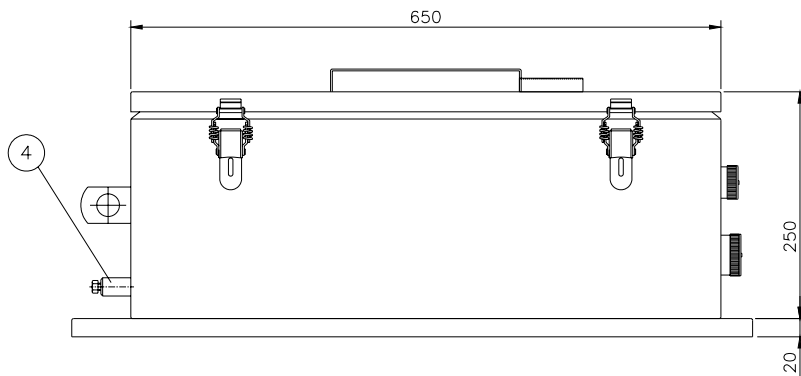
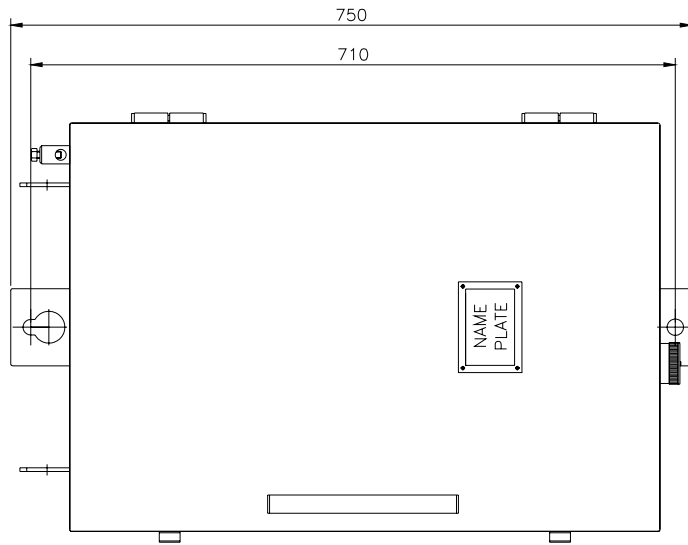
SCALE	DATE	NO.	NAME OF PARTS	MATERIAL	Q'TY	REMARKS	SIZE / PART DWG.
N/S	00.02						
REVISION			APPROV.	CHECKED	DSGND.	DRAWN.	NAME MOUNTING HARDWARE ASS'Y SF6 GAS LOAD BREAK SWITCH
						REF. NO.	
						DWG. NO.	JKID-3-0016





TOLERANCE :  $\pm 10\%$

SCALE	DATE						
N/S	2007.01	NO.	NAME OF PARTS	MATERIAL	Q'TY	REMARKS	SIZE / PART DWG.
		REVISION	APPROV.	CHECKED	DSGND.	DRAWN.	MOUNTING ARRANGEMENT SF <sub>6</sub> GAS LOAD BREAK SWITCH
						REF. NO.	
			 <b>Jinkwang E&amp;C Corporation</b>			DWG. NO.	JKGS-A-0101

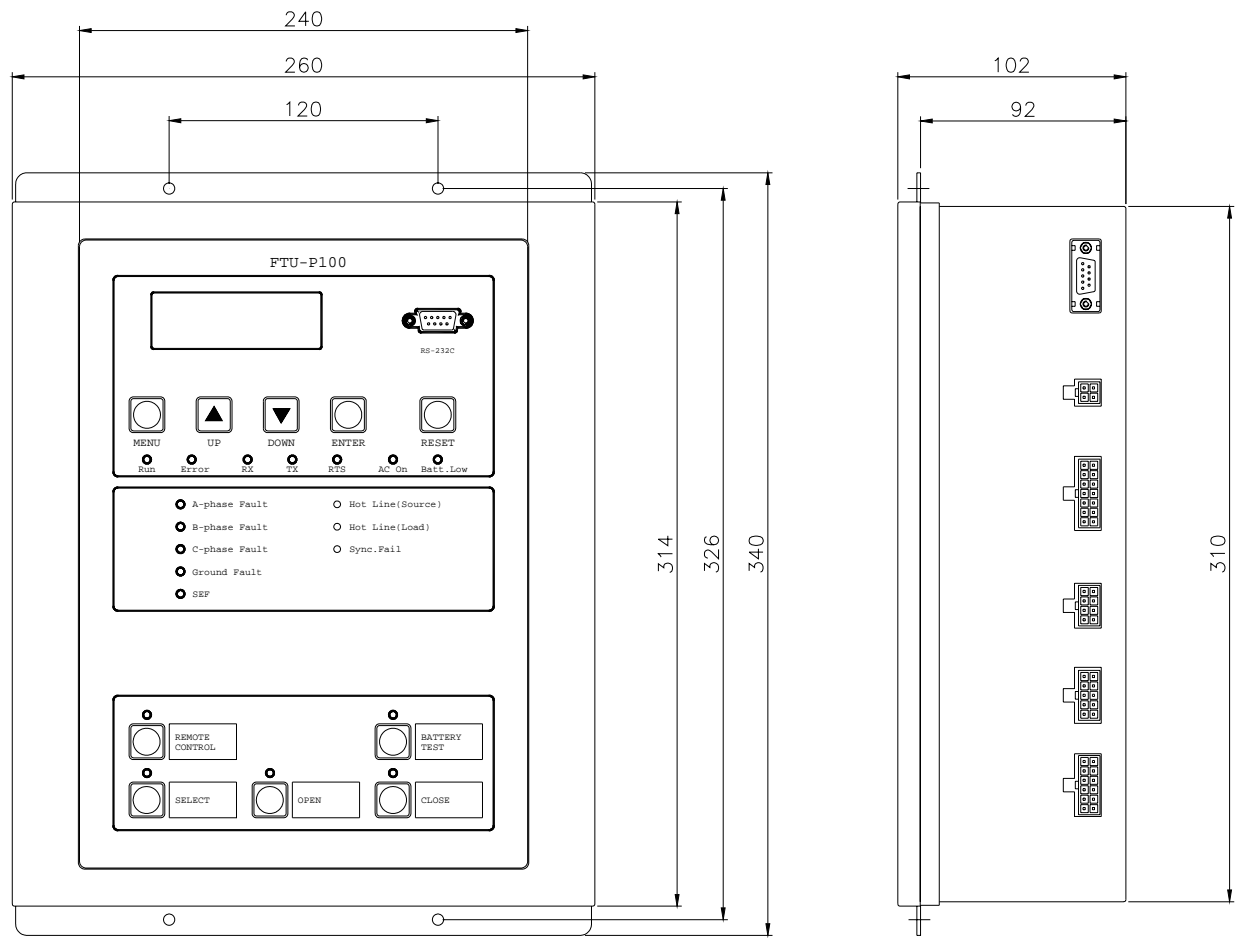


NO	DESCRIPTION
1	POWER RECEPTACLE
2	CONTROL RECEPTACLE
3	MODEM CABLE HOLE
4	EARTH TERMINAL

TOLERANCE:  $\pm 10\%$

SCALE	DATE	NO.		NAME OF PARTS		MATERIAL	Q'TY	REMARKS	SIZE/PART DWG.
N/S	2004.05								
REVISION				APPROV.	CHECKED	DSGND.	DRAWN.	NAME	CONTROL BOX
									SF <sub>6</sub> GAS LOAD BREAK SWITCH
								REF. NO.	
								DWG. NO.	JKPC-3-0001

 **Jinkwang & C Corporation**

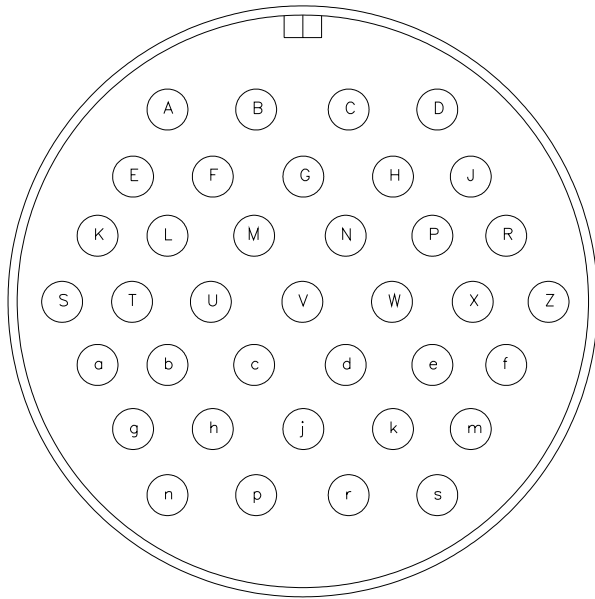


TOLERANCE : ±10%

SCALE	DATE	NO.	NAME OF PARTS	MATERIAL	Q'TY	REMARKS	SIZE/PART DWG.
N/S	2004.05						
REVISION			APPROV.	CHECKED	DSGND.	DRAWN.	CONTROL PANEL SF6 GAS LOAD BREAK SWITCH
						REF. NO.	
						DWG. NO.	JKPC-3-0003

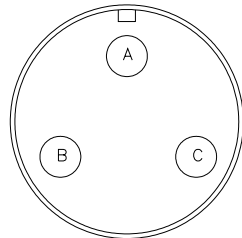


RECEPTACLE(37PIN)



PIN	DESCRIPTION	PIN	DESCRIPTION
A	A PHASE CURRENT SENSOR	W	CLOSE CONTROL
B	B PHASE CURRENT SENSOR	X	COM
C	C PHASE CURRENT SENSOR	Z	OPEN CONTROL
D	N PHASE CURRENT SENSOR	a	SPARE (A)
E	A PHASE VOLTAGE SENSOR	b	SPARE (COM)
F	B PHASE VOLTAGE SENSOR	c	SPARE (B)
G	C PHASE VOLTAGE SENSOR	d	SPARE (A)
H	R PHASE VOLTAGE SENSOR	e	SPARE (COM)
J	S PHASE VOLTAGE SENSOR	f	SPARE (B)
K	T PHASE VOLTAGE SENSOR	g	BLANK
L	BLANK	h	BLANK
M	BLANK	j	BLANK
N	BLANK	k	BLANK
P	AC EARTH	m	DC +
R	AC EARTH	n	DC -
S	CLOSE/OPEN MOTOR DC24V+	p	ELECTRICAL LOCK
T	CLOSE/OPEN MOTOR DC24V+	r	DC -
U	MECHANISM LOCK	s	DC -
V	LOW PRESSURE LOCK		

AC POWER RECEPTACLE(3PIN)



PIN	DESCRIPTION
A	AC 220V
B	AC 220V
C	SHIELD

SCALE	DATE	NO.	NAME OF PARTS	MATERIAL	Q'TY	REMARKS	SIZE/PART DWG.
N/S	2004.05						
REVISION			APPROV.	CHECKED	DSGND.	DRAWN.	RECEPTACLE PIN DESCRIPTION SF <sub>6</sub> GAS LOAD BREAK SWITCH
						REF. NO.	
						DWG. NO.	JKPC-3-0006